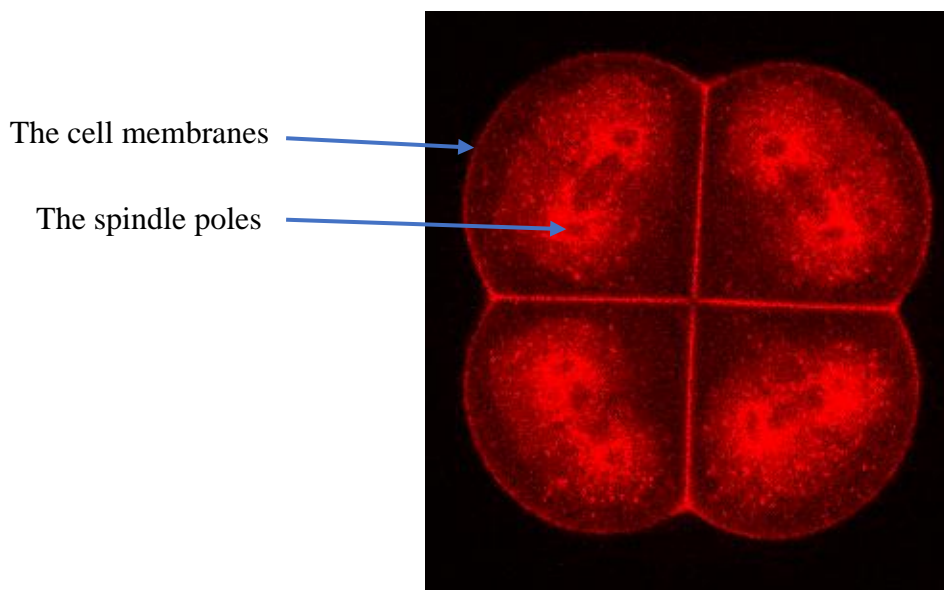


Protocol for labeling the cell membranes and metaphase spindle poles of ascidian embryos

Cell mask is a lipophilic red fluorescent marker that works well to label rapidly the cell membranes. In addition, following internalization cell mask vesicles accumulate around the spindle poles during mitosis, allowing the measurement of spindle position.



- Prepare a 1 mg/mL solution of Cell Mask in DMSO and store at -20°C.
- On the day of use dissolve 1 μ L Cell mask stock solution in 1 mL TAPS filtered seawater.
- Incubate the embryos at the eight-cell stage in this mixture for 2-4 min and then quickly transfer the labeled embryos to fresh TAPS-filtered seawater and wash three times.